






Charting a Clear Path Toward Sustainable & Livable Communities for All

FOUNDING PARTNERS

- A collaboration between ICLEI – Local Governments for Sustainability, U.S. Green Building Council, and Center for American Progress
- Inspired by the success of LEED Rating Systems
- ICLEI will administer the program



SPONSORS

GOLD SPONSORS \$ 75,000	BRONZE SPONSORS \$ 25,000
US Green Building Council The Johnson Foundation	American Institute of Architects City of Chicago City of Dallas City of Portland National League of Cities U.S. Environmental Protection Agency Westchester County
SILVER SPONSOR \$ 50,000	
City of Seattle	


OVERVIEW

- Improve sustainability and livability of U.S. communities
- Chart a clear path for local governments to take meaningful actions
- Standard means to measure and validate achievements



MATRIX OF LOCAL FRAMEWORKS

Themes



Usage of terms and themes do not share common definitions. This diversity makes it difficult to compare progress between one locality and another. Reduces opportunity to leverage change and share lessons learned.

DEFINITION

- Provide all citizens with equal and high quality opportunities to live, learn, work and play.
- Protect and restore the environment, and celebrate the services that nature provides.
- Healthy, safe, affordable and inclusive.

meet the needs of the present without compromising the ability of future generations to meet their own needs

Our Common Future, Brundtland Report


SCOPE

- Goals, policies and practices that address:
 - Operations
 - Services
 - Areas of Influence
- Flexible to address differences in:
 - Size and capacity
 - Local or regional priorities



AUDIENCE

- Primary audience elected officials and local government staff
- Serve as strategic planning tool, and improve decision-making
- Enhance accountability to citizens
- Local jurisdictions will apply to become a STAR Community



RATING SYSTEM

- National voluntary, consensus-based rating system
- Standard goals and performance measures
- Benchmark performance
- Validate achievement and recognize progress over time
- Allows for comparison



CRITERIA

- Leadership
- Ensure scientific validity and technical rigor
- Cost effective to implement and validate performance – based on triple bottom line
- Balance cost and rigor



CRITERIA

- Flexible to accommodate existing municipal programs
- Inclusive – encourages participation from small and large communities
- Address regional conditions
- Weight importance of issue
- Educate and facilitate information sharing



PROCESS



```

    graph TD
      A[STAKEHOLDER ENGAGEMENT] --> B[Steering Committee]
      B --> C[Technical Advisory Committees]
      C --> D[Corresponding Committees]
      D --> E[Public Comment]
  
```

Steering Committee

Local Government Members

Albuquerque, NM	Fayetteville, AR	St. Louis, MO
Asheville, NC	Franklin, TN	St. Petersburg, FL
Austin, TX	Kansas City, MO	Washington, DC
Boston, MA	New York, NY	
Boulder, CO	Oakland, CA	Arlington County
Chattanooga, TN	Olympia, WA	King County, WA
Chicago, IL	Portland, OR	Marin County, CA
Cleveland, OH	Racine, WI	Miami-Dade County, FL
Dallas, TX	Santa Monica, CA	Sarasota County, FL
Denver, CO	Seattle, WA	Westchester County

Steering Committee

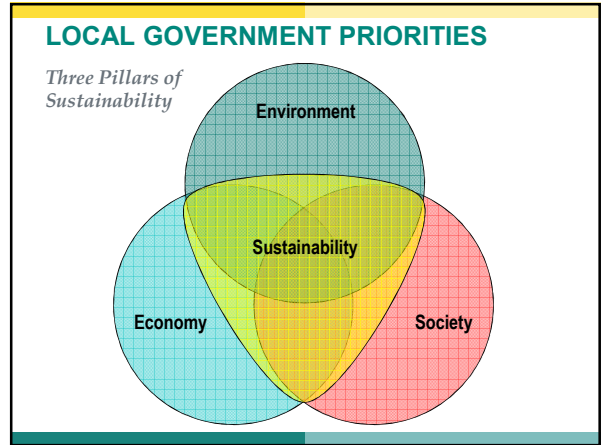
Federal Agencies & Associations

Centers for Disease Control & Prevention
U.S. Environmental Protection Agency
American Institute of Architects
American Planning Association
Enterprise Community Partners
Florida Green Building Coalition
Green for All
International City/County Managers Assoc
Local Government Commission
National Association of Counties
Natural Resources Defense Council
Urban Land Institute

Steering Committee

Executive Committee

Sadhu Johnston, <i>Chair</i> Chief Environmental Officer, Chicago, IL
Shannon Parry, <i>Vice-Chair</i> Sustainable City Coordinator, Santa Monica
Ken Rosenfeld, <i>Treasurer</i> Policy Director, National League of Cities
John Coleman, <i>Governance Officer</i> Sustainability Officer, Fayetteville, AR
Bracken Hendricks, Senior Fellow Center for American Progress
Lynne Barker Program Director, ICLEI
Jason Hartke, Director Advocacy & Public Policy, US Green Building Council



Technical Advisory Committees

- Collaborate with peer experts, staff and Steering Committee to develop goals and measures for STAR Community Index
- Organized according to the eight critical issue categories that are also being used to develop goals and measures

Environment <small>Natural Systems Planning & Design Energy & Climate</small>
Economy <small>Economic Development Employment & Workforce Training</small>
Society <small>Education, Arts & Community Health & Safety Affordability & Social Equity</small>

Technical Advisory Committees

Environment

- Natural Systems**
(ecosystems, habitat, water, stormwater, air quality, waste & resource conservation)
- Planning & Design**
(land use, transportation & mobility, parks, open space, recreation)
- Energy & Climate**
(energy, emissions, renewable energy, green building)

A photograph of a red trolley at a transit stop. The trolley is on a track, and there is a modern glass and metal shelter in the foreground. The background shows a city street with buildings and trees.

Technical Advisory Committees

Economy

- **Economic Prosperity**
(clean technologies and green job creation, local commerce, tourism, and local food system)
- **Employment & Workforce Training**
(green job training, employment and workforce wages, youth skills)



Technical Advisory Committees

Society

- **Education, Arts & Community**
(education excellence, arts and culture, civic engagement)
- **Health & Safety**
(community health and wellness, access to health care, public safety)
- **Affordability & Social Equity**
(affordable & workforce housing, poverty, human services, race and social equity)



Committee Goals

- Build collaborative relationships
- Identify priorities that will comprise the STAR system – “credits”
- Discuss the intent of credits, or what we hope to achieve
- Committee business

FRAMEWORK

Goal: What is the issue?

Purpose: What are we trying to achieve?

Measure: What is the performance measure to validate achievement?

- **Policy**
- **Practice**
- **Performance**
- **Progress**

DEVELOPMENT SCHEDULE

Planning, Engagement, Capacity Building	Jun – Dec 2008
Program Development	Jan 2009 – Oct 2010
Develop Tools & Resources	Jan – Oct 2010
Target Launch Date	November 2010

ESTIMATED BUDGET

2008: Planning, Engagement, Capacity Building	\$ 214,000
2009: Program Development	\$ 1,370,000
2010: Program Development; Tools & Resources	\$ 3,022,000
TOTAL	\$ 4,506,000

SPONSORSHIP

PLATINUM Partner & Corporate Sponsor	\$ 100,000
GOLD Sponsor	\$ 75,000
SILVER Sponsor <i>Targeting Counties & Large Cities >1,000,000</i>	\$ 50,000
BRONZE Sponsor <i>Targeting Counties & Small Cities <1,000,000</i>	\$ 25,000

Local Government Sponsor Benefits

- Education and training to establish staff expertise
- Access to tools and technical resources
- Program registration
- Technical support to assist with implementation
- Recognition in program materials



Contact:

Lynne Barker, Program Director
lynne.barker@iclei.org
(206) 910-8800
www.icleiusa.org/star

 Local Action Moves the World